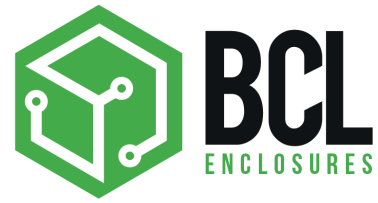
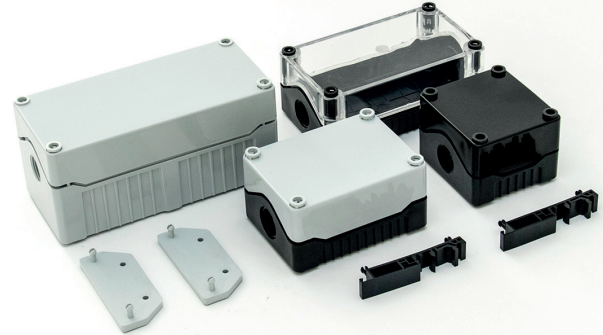


Technical Information: IP67 BO ENCLOSURES WITHOUT HOLE



OVERVIEW

These IP67 ABS enclosures are available in 4 sizes with a standard or deep base options, they are suitable for enclosing printed circuit boards either vertically or horizontally. Supplied complete with 4 captive plastic screws and come complete with M20 threaded cable knockouts.



FEATURES

Available in 4 sizes – standard & deep base.

Sealed to IP67.

Complete with M20 threaded cable knockouts

Captive screws in lid

Available in standard and deep base

Suitable for enclosing printed circuit boards – vertically (via mounting slots) or horizontally

Unique snap-on DIN rail and flange brackets available

BO1 ENCLOSURE STANDARD BASE – 53MM

| PRODUCT CODE | IP RATING | COLOUR | ENCLOSURE MATERIAL | H (MM) | W (MM) | D (MM) | TEMP RATING |
|--------------|-----------|-------------------|--------------------|--------|--------|--------|----------------|
| BO1SBB | 67 | Black/Black | ABS | 80 | 73 | 53 | -10°C to +65°C |
| BO1SGG | 67 | Grey/Grey | ABS | 80 | 73 | 53 | -10°C to +65°C |
| BO1SBG | 67 | Black/Grey | ABS | 80 | 73 | 53 | -10°C to +65°C |
| BO1SGB | 67 | Grey/Black | ABS | 80 | 73 | 53 | -10°C to +65°C |
| BO1STB | 67 | Transparent/Black | ABS | 80 | 73 | 53 | -10°C to +65°C |
| BO1STG | 67 | Transparent/Grey | ABS | 80 | 73 | 53 | -10°C to +65°C |

BO1 ENCLOSURE DEEP BASE – 78MM

| PRODUCT CODE | IP RATING | COLOUR | ENCLOSURE MATERIAL | H (MM) | W (MM) | D (MM) | TEMP RATING |
|--------------|-----------|-------------------|--------------------|--------|--------|--------|----------------|
| BO1DBB | 67 | Black/Black | ABS | 80 | 73 | 78 | -10°C to +65°C |
| BO1DGG | 67 | Grey/Grey | ABS | 80 | 73 | 78 | -10°C to +65°C |
| BO1DBG | 67 | Black/Grey | ABS | 80 | 73 | 78 | -10°C to +65°C |
| BO1DGB | 67 | Grey/Black | ABS | 80 | 73 | 78 | -10°C to +65°C |
| BO1DTB | 67 | Transparent/Black | ABS | 80 | 73 | 78 | -10°C to +65°C |
| BO1DTG | 67 | Transparent/Grey | ABS | 80 | 73 | 78 | -10°C to +65°C |

BO2 ENCLOSURE STANDARD BASE – 53MM

| PRODUCT CODE | IP RATING | COLOUR | ENCLOSURE MATERIAL | H (MM) | W (MM) | D (MM) | TEMP RATING |
|--------------|-----------|-------------------|--------------------|--------|--------|--------|----------------|
| BO2SBB | 67 | Black/Black | ABS | 80 | 106 | 53 | -10°C to +65°C |
| BO2SGG | 67 | Grey/Grey | ABS | 80 | 106 | 53 | -10°C to +65°C |
| BO2SBG | 67 | Black/Grey | ABS | 80 | 106 | 53 | -10°C to +65°C |
| BO2SGB | 67 | Grey/Black | ABS | 80 | 106 | 53 | -10°C to +65°C |
| BO2STB | 67 | Transparent/Black | ABS | 80 | 106 | 53 | -10°C to +65°C |
| BO2STG | 67 | Transparent/Grey | ABS | 80 | 106 | 53 | -10°C to +65°C |

BO2 ENCLOSURE DEEP BASE – 78MM

| PRODUCT CODE | IP RATING | COLOUR | ENCLOSURE MATERIAL | H (MM) | W (MM) | D (MM) | TEMP RATING |
|--------------|-----------|-------------------|--------------------|--------|--------|--------|----------------|
| BO2DBB | 67 | Black/Black | ABS | 80 | 106 | 78 | -10°C to +65°C |
| BO2DGG | 67 | Grey/Grey | ABS | 80 | 106 | 78 | -10°C to +65°C |
| BO2DBG | 67 | Black/Grey | ABS | 80 | 106 | 78 | -10°C to +65°C |
| BO2DGB | 67 | Grey/Black | ABS | 80 | 106 | 78 | -10°C to +65°C |
| BO2DTB | 67 | Transparent/Black | ABS | 80 | 106 | 78 | -10°C to +65°C |
| BO2DTG | 67 | Transparent/Grey | ABS | 80 | 106 | 78 | -10°C to +65°C |

BO3 ENCLOSURE STANDARD BASE – 53MM

| PRODUCT CODE | IP RATING | COLOUR | ENCLOSURE MATERIAL | H (MM) | W (MM) | D (MM) | TEMP RATING |
|--------------|-----------|-------------------|--------------------|--------|--------|--------|----------------|
| BO3SBB | 67 | Black/Black | ABS | 80 | 139 | 53 | -10°C to +65°C |
| BO3SGG | 67 | Grey/Grey | ABS | 80 | 139 | 53 | -10°C to +65°C |
| BO3SBG | 67 | Black/Grey | ABS | 80 | 139 | 53 | -10°C to +65°C |
| BO3SGB | 67 | Grey/Black | ABS | 80 | 139 | 53 | -10°C to +65°C |
| BO3STB | 67 | Transparent/Black | ABS | 80 | 139 | 53 | -10°C to +65°C |
| BO3STG | 67 | Transparent/Grey | ABS | 80 | 139 | 53 | -10°C to +65°C |

BO3 ENCLOSURE DEEP BASE – 78MM

| PRODUCT CODE | IP RATING | COLOUR | ENCLOSURE MATERIAL | H (MM) | W (MM) | D (MM) | TEMP RATING |
|--------------|-----------|-------------------|--------------------|--------|--------|--------|----------------|
| BO3DBB | 67 | Black/Black | ABS | 80 | 139 | 78 | -10°C to +65°C |
| BO3DGG | 67 | Grey/Grey | ABS | 80 | 139 | 78 | -10°C to +65°C |
| BO3DBG | 67 | Black/Grey | ABS | 80 | 139 | 78 | -10°C to +65°C |
| BO3DGB | 67 | Grey/Black | ABS | 80 | 139 | 78 | -10°C to +65°C |
| BO3DTB | 67 | Transparent/Black | ABS | 80 | 139 | 78 | -10°C to +65°C |
| BO3DTG | 67 | Transparent/Grey | ABS | 80 | 139 | 78 | -10°C to +65°C |

BO4 ENCLOSURE STANDARD BASE – 53MM

| PRODUCT CODE | IP RATING | COLOUR | ENCLOSURE MATERIAL | H (MM) | W (MM) | D (MM) | TEMP RATING |
|--------------|-----------|-------------------|--------------------|--------|--------|--------|----------------|
| BO4SBB | 67 | Black/Black | ABS | 80 | 172 | 53 | -10°C to +65°C |
| BO4SGG | 67 | Grey/Grey | ABS | 80 | 172 | 53 | -10°C to +65°C |
| BO4SBG | 67 | Black/Grey | ABS | 80 | 172 | 53 | -10°C to +65°C |
| BO4SGB | 67 | Grey/Black | ABS | 80 | 172 | 53 | -10°C to +65°C |
| BO4STB | 67 | Transparent/Black | ABS | 80 | 172 | 53 | -10°C to +65°C |
| BO4STG | 67 | Transparent/Grey | ABS | 80 | 172 | 53 | -10°C to +65°C |

BO4 ENCLOSURE DEEP BASE – 78MM

| PRODUCT CODE | IP RATING | COLOUR | ENCLOSURE MATERIAL | H (MM) | W (MM) | D (MM) | TEMP RATING |
|--------------|-----------|-------------------|--------------------|--------|--------|--------|----------------|
| BO4DBB | 67 | Black/Black | ABS | 80 | 172 | 78 | -10°C to +65°C |
| BO4DGG | 67 | Grey/Grey | ABS | 80 | 172 | 78 | -10°C to +65°C |
| BO4DBG | 67 | Black/Grey | ABS | 80 | 172 | 78 | -10°C to +65°C |
| BO4DGB | 67 | Grey/Black | ABS | 80 | 172 | 78 | -10°C to +65°C |
| BO4DTB | 67 | Transparent/Black | ABS | 80 | 172 | 78 | -10°C to +65°C |
| BO4DTG | 67 | Transparent/Grey | ABS | 80 | 172 | 78 | -10°C to +65°C |



VIEW OUR ENTIRE RANGE AT [BCLENCLOSURES.COM](https://www.bclenclosures.com)

